

Online Citizen Budget Results

May 29 - June 25, 2017



City of Saskatoon

Online Budget Consultation Report

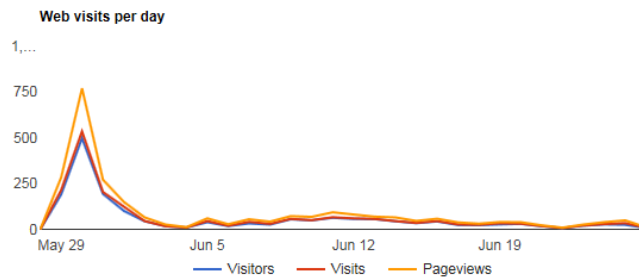
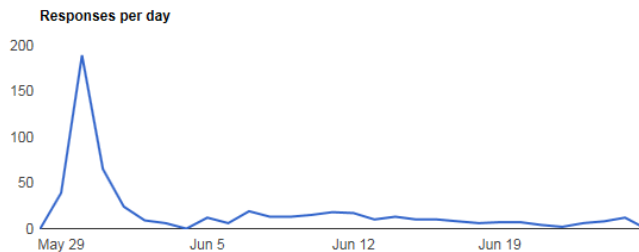
For the period May 28 to June 26, 2017

Prepared by Open North for: City of Saskatoon

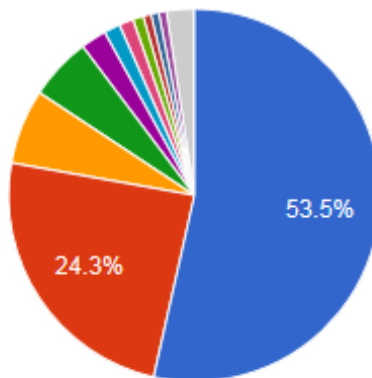
1,596
Visitors

554
Responses
34.7%
participation

7
minutes
Median time to
complete



Web traffic sources



- (direct)
- m.facebook.com
- facebook.com
- t.co
- thestarphoenix.com
- shapingsaskatoon.ca
- google
- lm.facebook.com

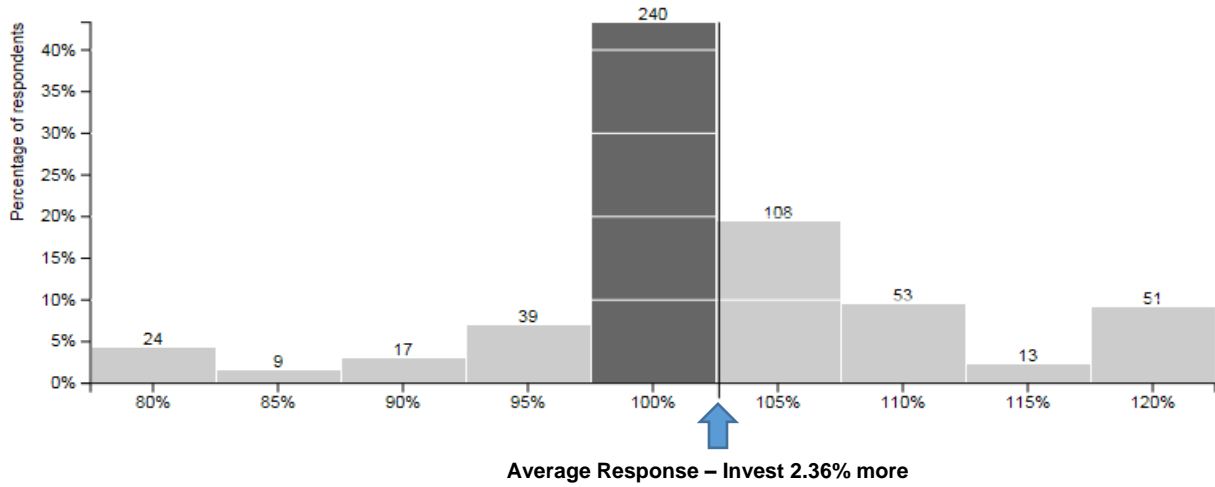
▲ 1/2 ▼

Trends

Responses for each question:

Road Maintenance

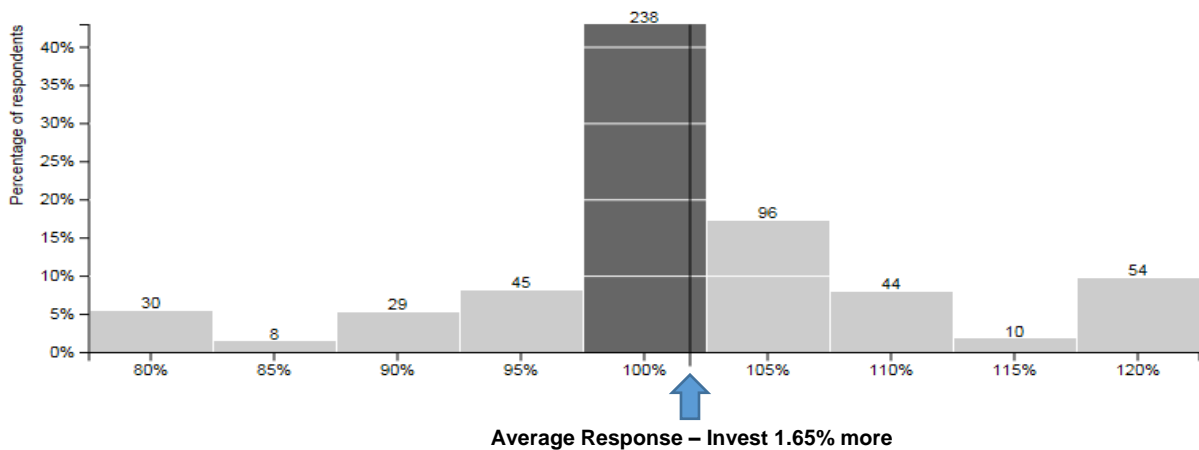
1 How would you adjust your property tax funding for Road Maintenance in the city?



Less	Same	More
89	240	225
16%	43%	41%

Snow & Ice Management

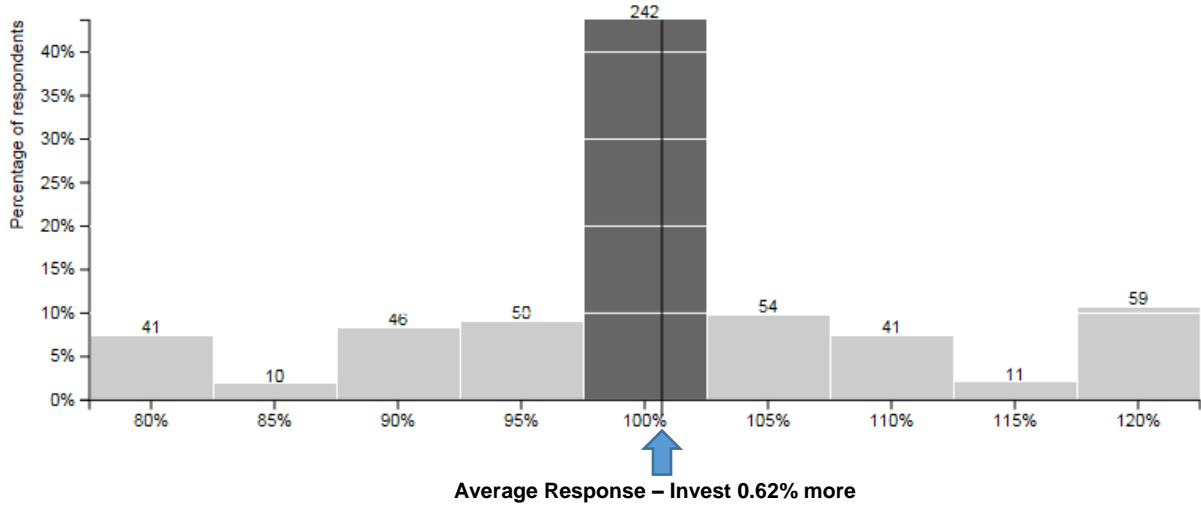
2 How would you adjust your property tax funding for Snow & Ice Management in the city?



Less	Same	More
112	238	204
20%	43%	37%

Traffic Management

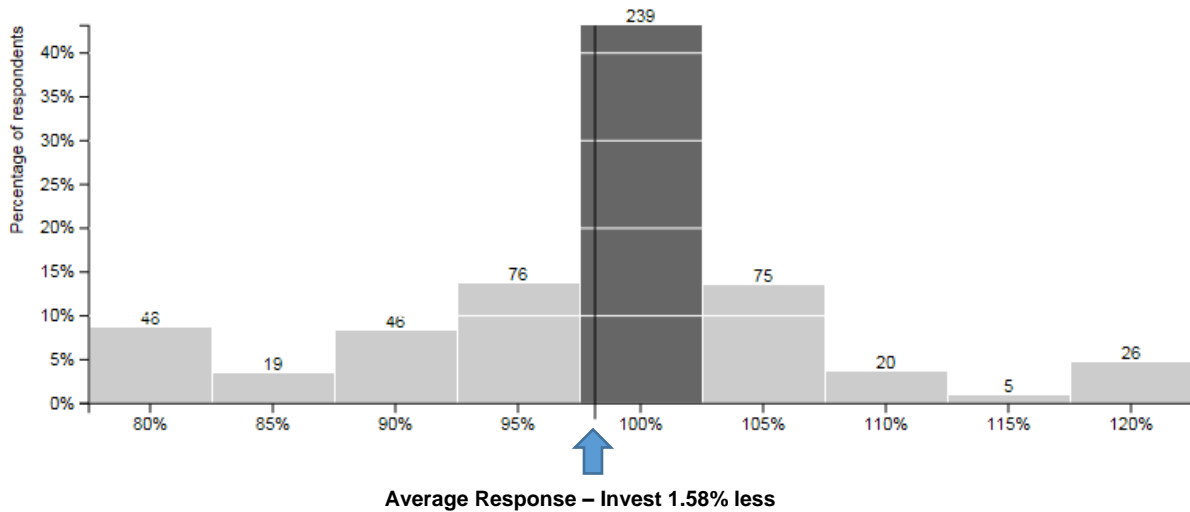
3 How would you adjust your property tax funding for Traffic Management in Saskatoon?



Less	Same	More
147	242	165
26%	44%	30%

Saskatoon Police Service

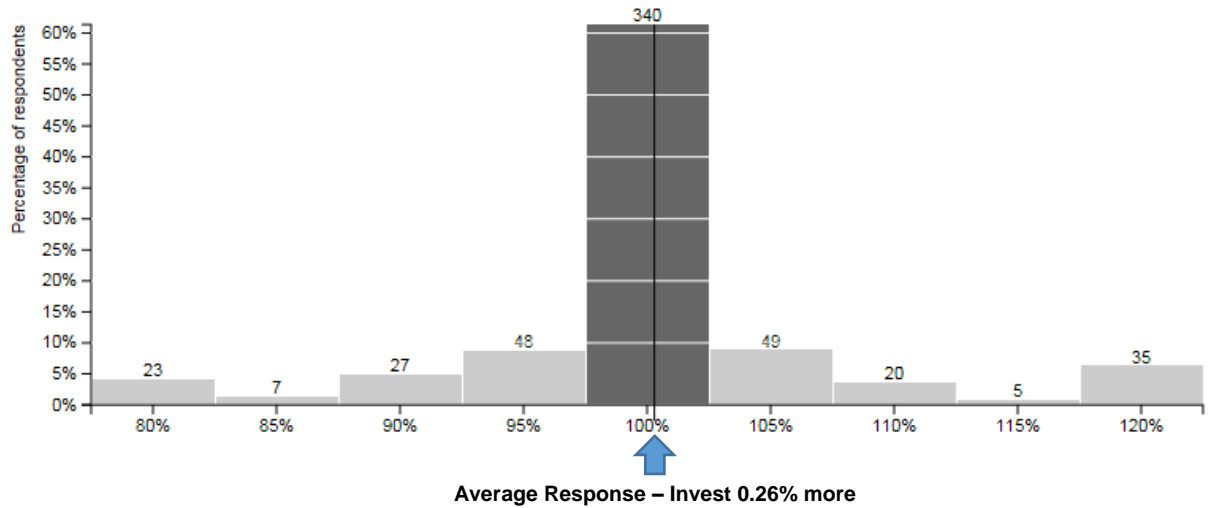
4 How would you adjust your property tax funding for the Saskatoon Police Service?



Less	Same	More
189	239	126
34%	43%	23%

Fire

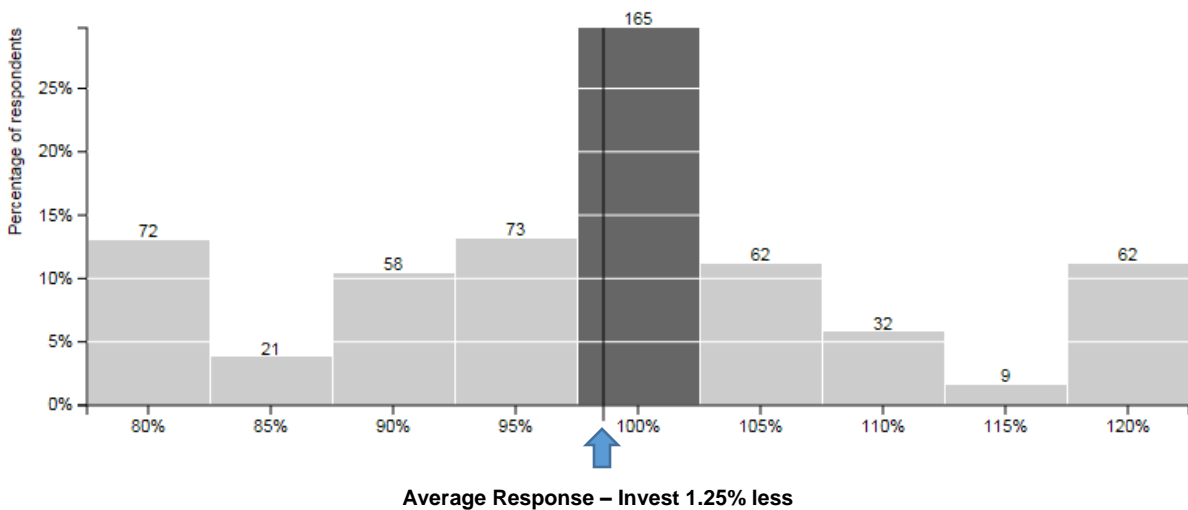
5 How would you adjust your property tax funding for the Saskatoon Fire Department?



Less	Same	More
105	340	109
19%	61%	20%

Transit/Access Transit

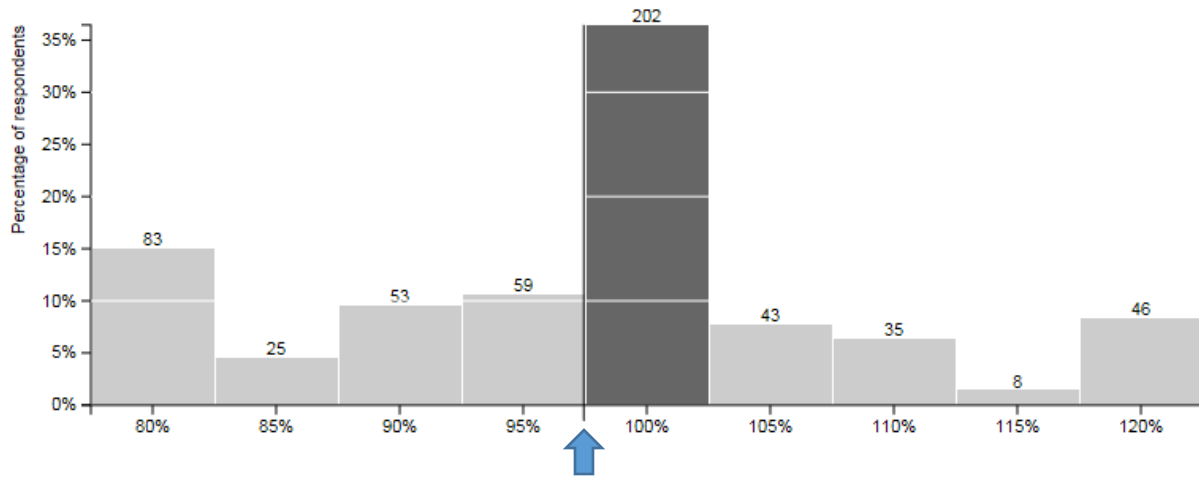
6 How would you adjust your property tax funding for Saskatoon Transit?



Less	Same	More
224	165	165
40%	30%	30%

Planning for Growth & Development

7 How would you adjust your property tax funding for Planning & Growth Development in Saskatoon?

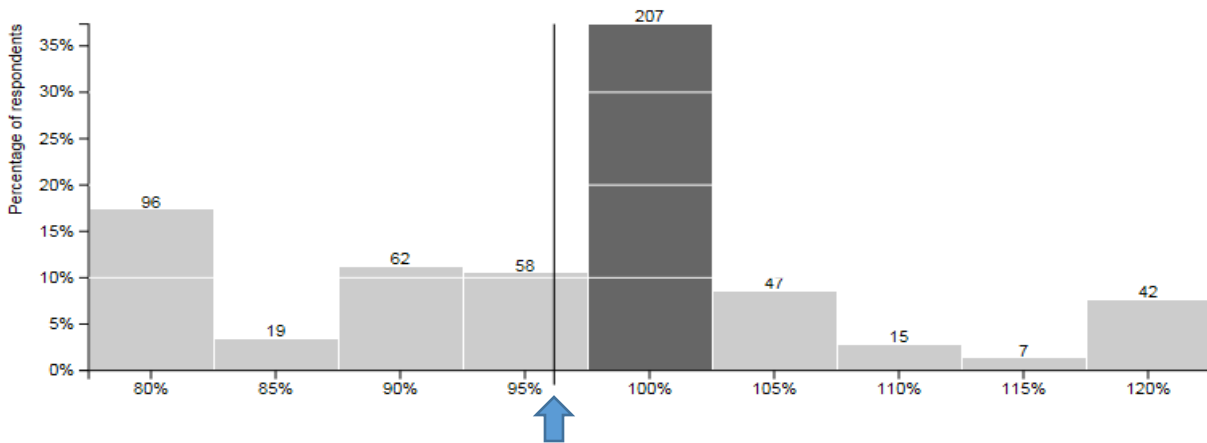


Average Response – Invest 2.27% less

Less	Same	More
220	202	132
40%	36%	24%

Community Grants

9 How would you adjust your property tax funding for Community Grants?

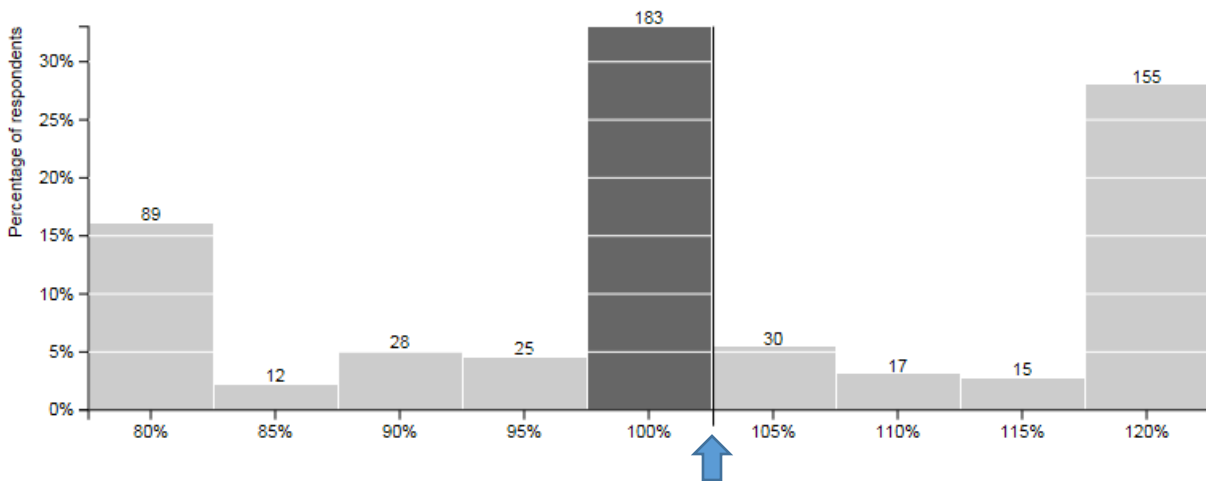


Average Response – Invest 3.22% less

Less	Same	More
235	207	111
42%	37%	20%

Affordable Housing

8 How would you adjust your property tax funding for Affordable Housing?

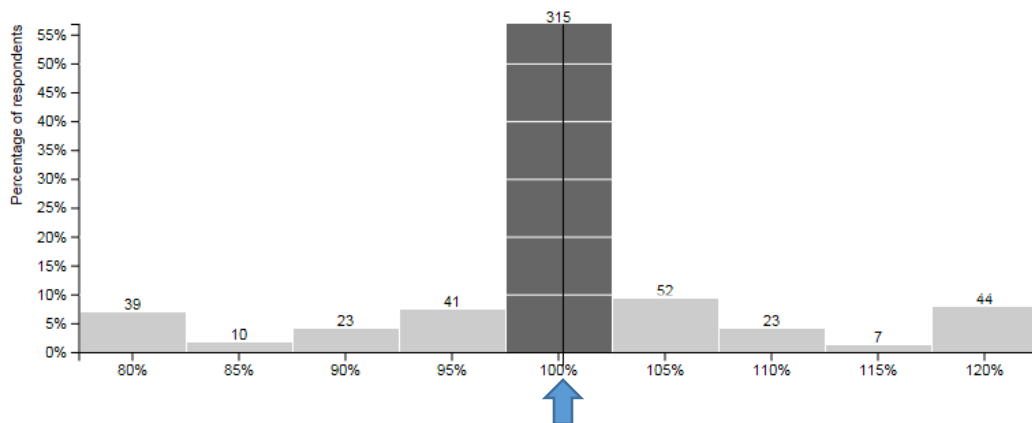


Average Response – Invest 2.31% more

Less	Same	More
154	183	217
28%	33%	39%

Garbage & Waste Reduction

10 How would you adjust your property tax funding for Garbage & Waste Reduction programs and services in Saskatoon?

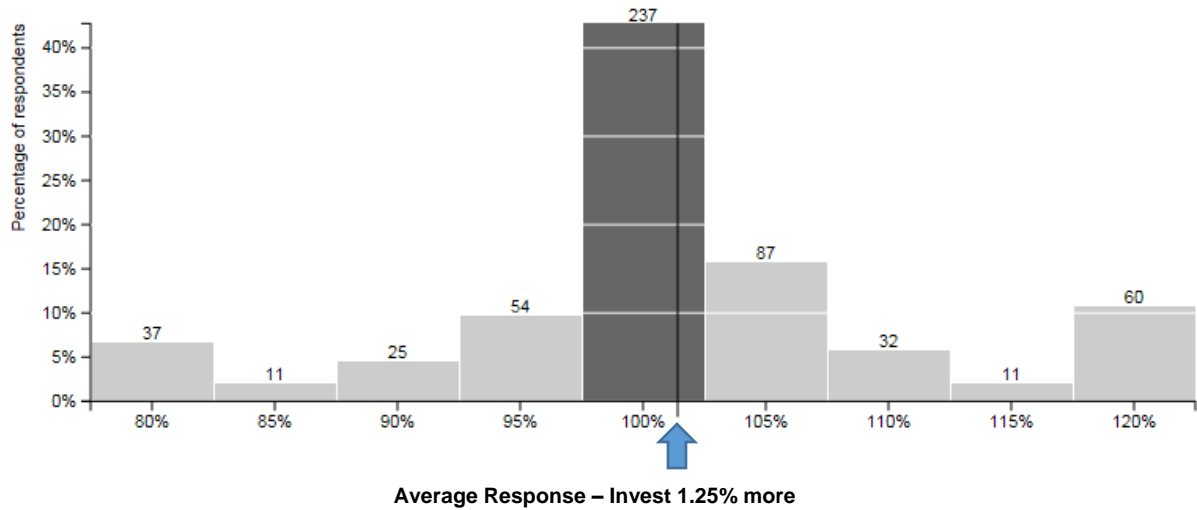


Average Response – Invest 0.20% more

Less	Same	More
113	315	126
20%	57%	23%

Parks

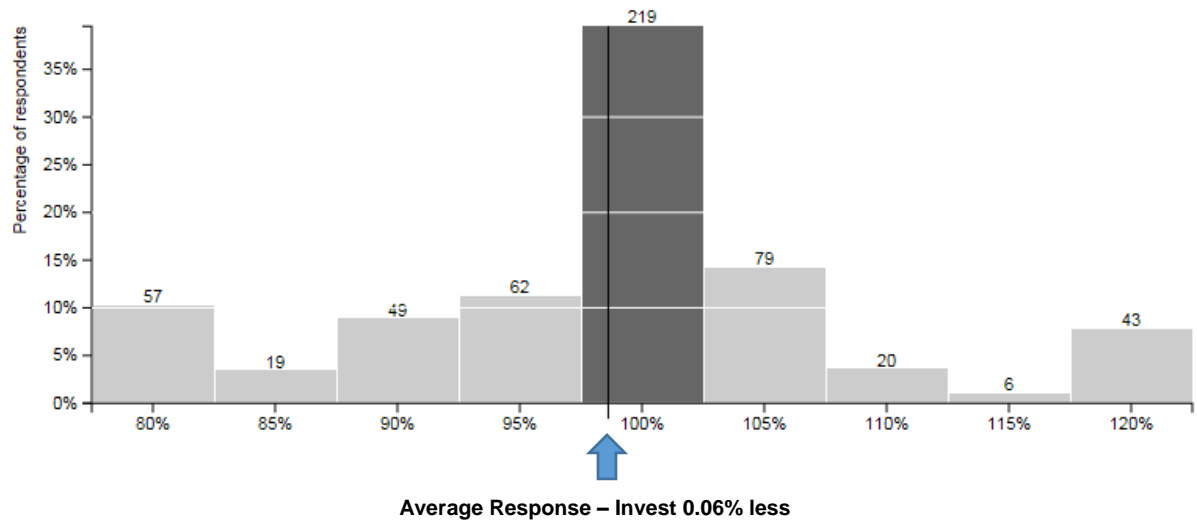
11 How would you adjust your property tax funding for the Parks program in Saskatoon?



Less	Same	More
127	237	190
23%	43%	34%

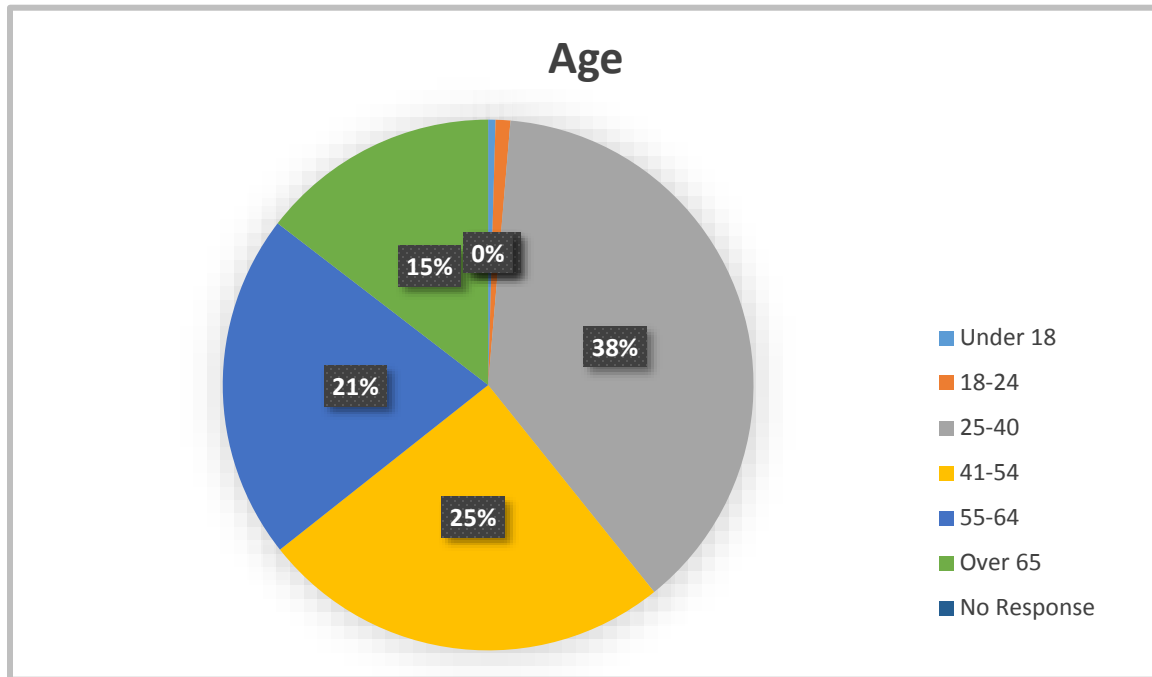
Recreation & Culture

12 How would you adjust your property tax funding for Recreation & Culture in Saskatoon?

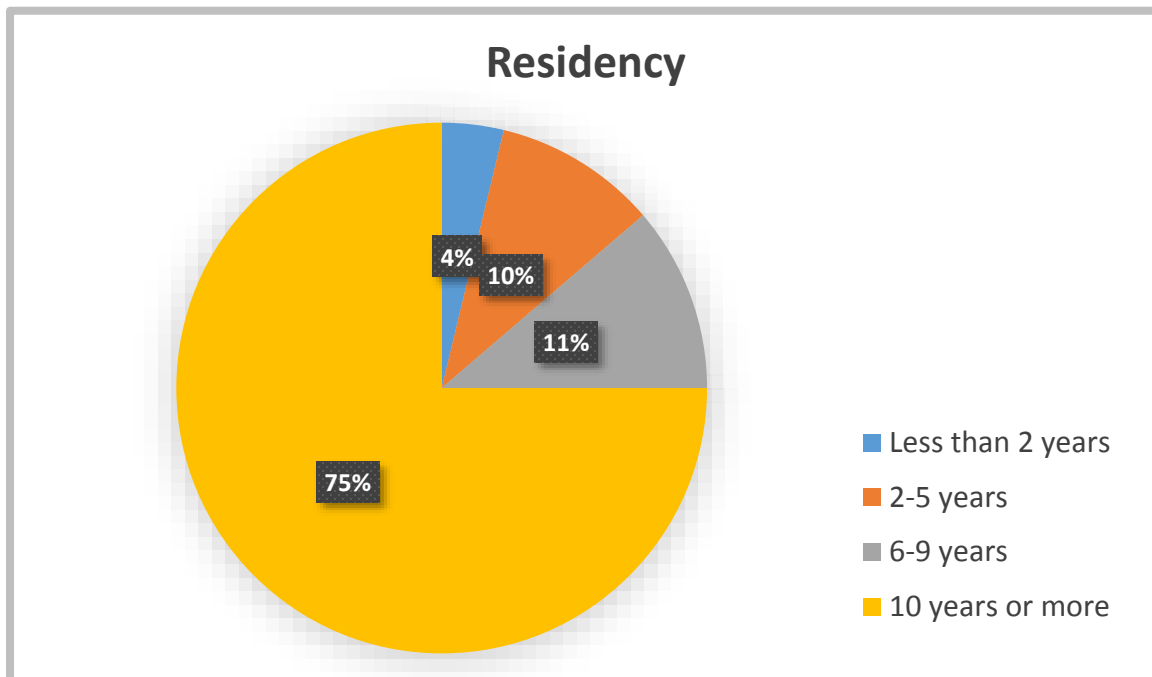


Less	Same	More
187	219	148
34%	39%	27%

Demographics

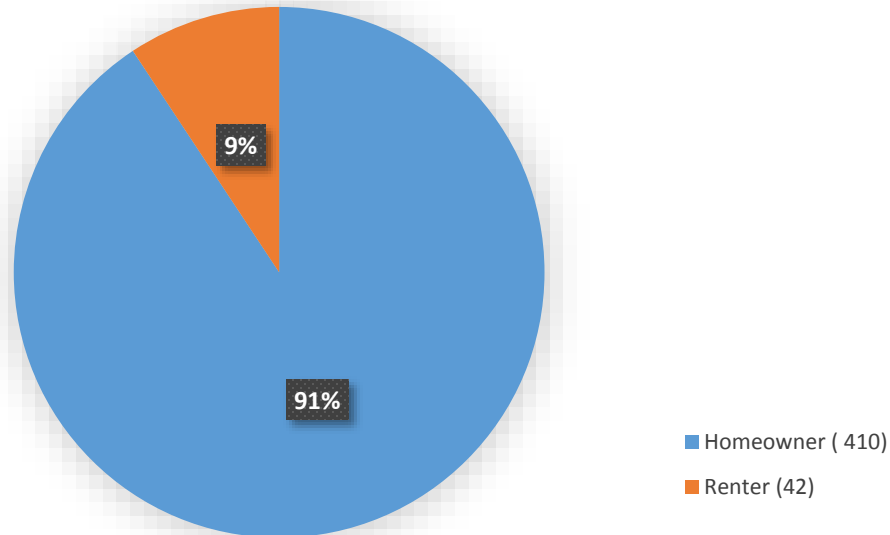


The majority of respondents, 49%, were older than 40 years; 38% of this year's respondents were 25-40 years old.



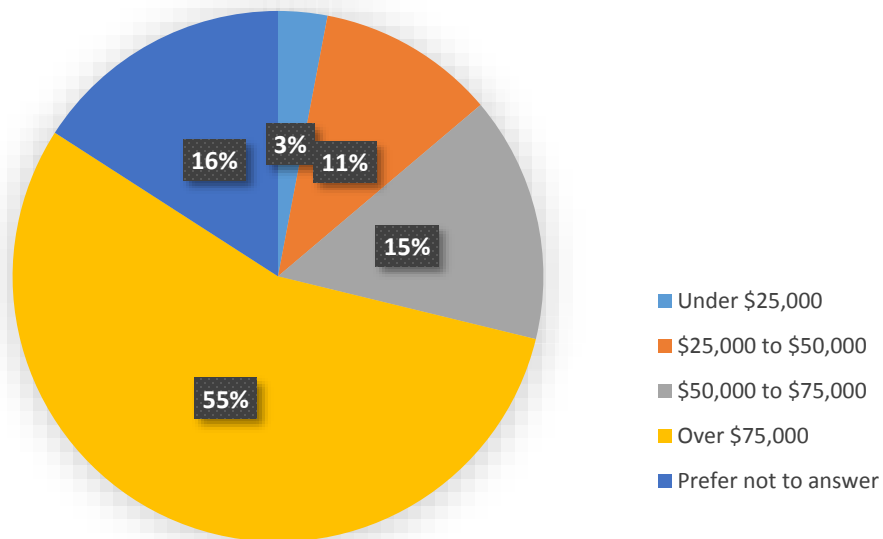
The large majority (75%) of respondents are long-time residents of Saskatoon, having lived in the City 10 years or more.

Status



An overwhelming majority (91%) of respondents are homeowners.

Household Income

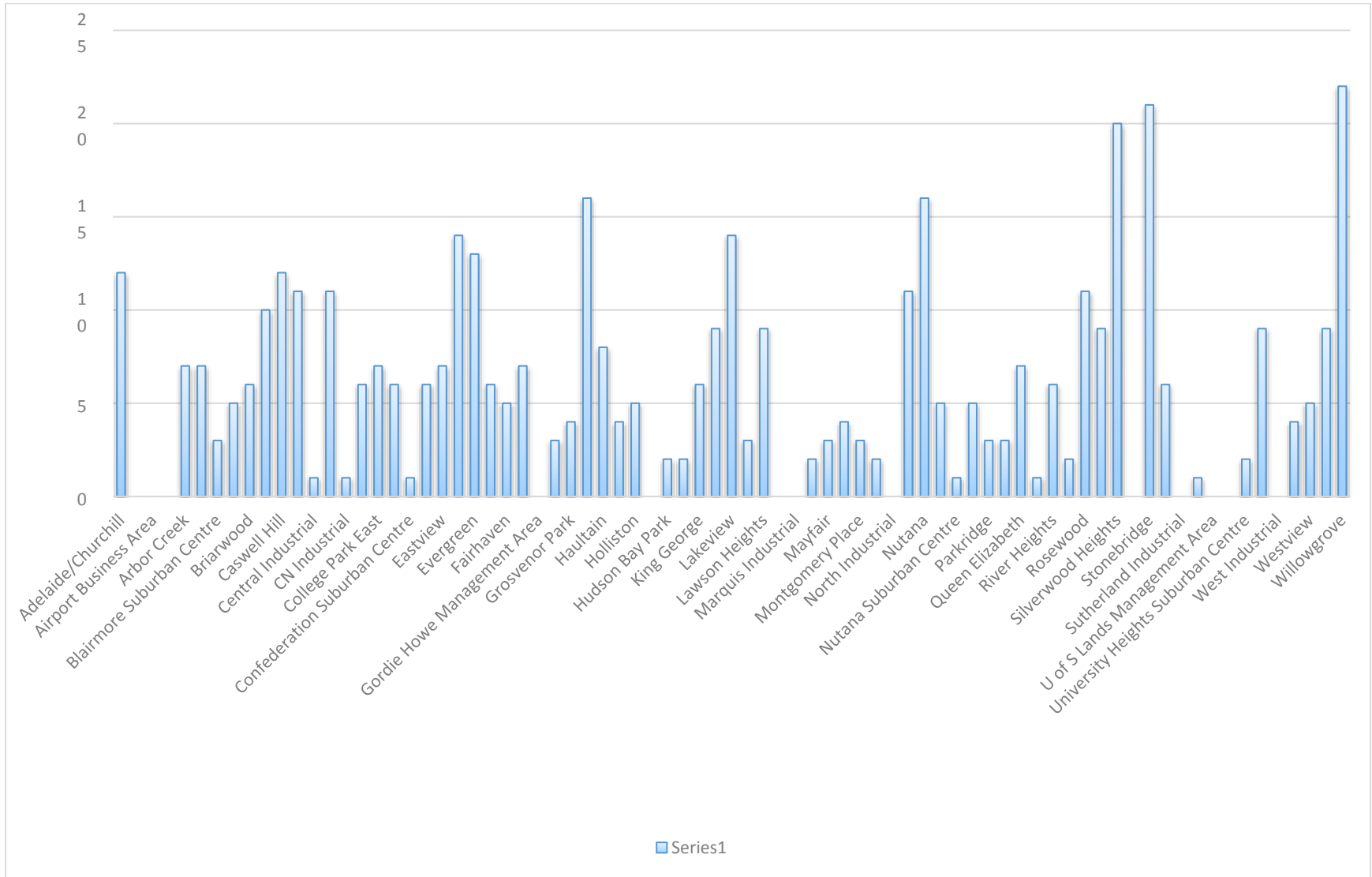


The majority of respondents (55%) have a household income over \$75,000, 15% have a household income of \$50,000 - \$75,000, 15% have a household income of less than \$50,000 and 16% prefer to not answer.

Respondents by Neighbourhood

Adelaide/Churchill	12	Lakewood Suburban Centre	3
Agriplace	0	Lawson Heights	9
Airport Business Area	0	Lawson Heights Suburban Centre	0
Airport Management Area	0	Marquis Industrial	0
Arbor Creek	7	Massey Place	2
Avalon	7	Mayfair	3
Blairmore Suburban Centre	3	Meadowgreen	4
Brevoort Park	5	Montgomery Place	3
Briarwood	6	Mount Royal	2
Buena Vista	10	North Industrial	0
Caswell Hill	12	North Park	11
Central Business District	11	Nutana	16
Central Industrial	1	Nutana Park	5
City Park	11	Nutana Suburban Centre	1
CN Industrial	1	Pacific Heights	5
College Park	6	Parkridge	3
College Park East	7	Pleasant Hill	3
Confederation Park	6	Queen Elizabeth	7
Confederation Suburban Centre	1	Richmond Heights	1
Dundonald	6	River Heights	6
Eastview	7	Riversdale	2
Erindale	14	Rosewood	11
Evergreen	13	Silverspring	9
Exhibition	6	Silverwood Heights	20
Fairhaven	5	South West Industrial	0
Forest Grove	7	Stonebridge	21
Gordie Howe Management Area	0	Sutherland	6
Greystone Heights	3	Sutherland Industrial	0
Grosvenor Park	4	The Willows	1
Hampton Village	16	U of S Lands Management Area	0
Haultain	8	U of S Lands South Management Area	0
Holiday Park	4	University Heights Suburban Centre	2
Holliston	5	Varsity View	9
Hudson Bay Industrial	0	West Industrial	0
Hudson Bay Park	2	Westmount	4
Kelsey - Woodlawn	2	Westview	5
King George	6	Wildwood	9
Lakeridge	9	Willowgrove	22
Lakeview	14		

Respondents by Neighbourhood



THE CITY OF SASKATOON	Spend less than 2017 Budget				Spend the same as 2017 Budget	Spend more than 2017 Budget				554 Total responses	
	20% less	15% less	10% less	5% less	The same	5% more	10% more	15% more	20% more	Average response	Average Answer
Road Maintenance											
# of responses	24	9	17	39	240	108	53	13	51	2.36	Invest up to 2% more
% of responses	4.33%	1.62%	3.07%	7.04%	43.32%	19.49%	9.57%	2.35%	9.21%		
	5.96%		10.11%			29.06%		11.55%			
	16.06%					40.61%					
Average change	-11.01				0.00	10.16					
Snow & Ice Management											
# of responses	30	8	29	45	238	96	44	10	54	1.65	Invest up to 2% more
% of responses	5.42%	1.44%	5.23%	8.12%	42.96%	17.33%	7.94%	1.81%	9.75%		
	6.86%		13.36%			25.27%		11.55%			
	20.22%					36.82%					
Average change	-11.03				0.00	10.54					
Traffic Management											
# of responses	41	10	46	50	242	54	41	11	59	0.62	No change
% of responses	7.40%	1.81%	8.30%	9.03%	43.68%	9.75%	7.40%	1.99%	10.65%		
	9.21%		17.33%			17.15%		12.64%			
	26.53%					29.78%					
Average change	-11.43				0.00	12.27					
Saskatoon Police Service											
# of responses	46	19	46	76	239	75	20	5	26	-1.58	Invest 2% less
% of responses	8.30%	3.43%	8.30%	13.72%	43.14%	13.54%	3.61%	0.90%	4.69%		
	11.73%		22.02%			17.15%		5.60%			
	33.75%					22.74%					
Average change	-10.94				0.00	9.29					
Fire											
# of responses	23	7	27	48	340	49	20	5	35	0.26	No change
% of responses	4.15%	1.26%	4.87%	8.66%	61.37%	8.84%	3.61%	0.90%	6.32%		
	5.42%		13.54%			12.45%		7.22%			
	18.95%					19.68%					
Average change	-10.24				0.00	11.19					
Transit/Access Transit											
# of responses	72	21	58	73	165	62	32	9	62	-1.25	Invest up to 1% less
% of responses	13.00%	3.79%	10.47%	13.18%	29.78%	11.19%	5.78%	1.62%	11.19%		
	16.79%		23.65%			16.97%		12.82%			
	40.43%					29.78%					
Average change	-12.05				0.00	12.15					
Planning for Growth & Development											
# of responses	83	25	53	59	202	43	35	8	46	-2.27	Invest up to 2% less
% of responses	14.98%	4.51%	9.57%	10.65%	36.46%	7.76%	6.32%	1.44%	8.30%		
	19.49%		20.22%			14.08%		9.75%			
	39.71%					23.83%					
Average change	-13.00				0.00	12.16					

Affordable Housing	20% less	15% less	10% less	5% less	The same	5% more	10% more	15% more	20% more	Average response	Average Answer
# of responses	89	12	28	25	183	30	17	15	155	2.31	Invest up to 2% more
% of responses	16.06%	2.17%	5.05%	4.51%	33.03%	5.42%	3.07%	2.71%	27.98%		
	18.23%		9.57%			8.48%		30.69%			
	27.80%					39.17%					
Average change	-15.36				0.00	16.80					
Community Grants	20% less	15% less	10% less	5% less	The same	5% more	10% more	15% more	20% more	Average response	Average Answer
# of responses	96	19	62	58	207	47	15	7	42	-3.22	Invest up to 3% less
% of responses	17.33%	3.43%	11.19%	10.47%	37.36%	8.48%	2.71%	1.26%	7.58%		
	20.76%		21.66%			11.19%		8.84%			
	42.42%					20.04%					
Average change	-13.26				0.00	11.98					
Garbage & Waste Reduction	20% less	15% less	10% less	5% less	The same	5% more	10% more	15% more	20% more	Average response	Average Answer
# of responses	39	10	23	41	315	52	23	7	44	0.20	No change
% of responses	7.04%	1.81%	4.15%	7.40%	56.86%	9.39%	4.15%	1.26%	7.94%		
	8.84%		11.55%			13.54%		9.21%			
	20.40%					22.74%					
Average change	-12.08				0.00	11.71					
Parks	20% less	15% less	10% less	5% less	The same	5% more	10% more	15% more	20% more	Average response	Average Answer
# of responses	37	11	25	54	237	87	32	11	60	1.25	Invest over 1% more
% of responses	6.68%	1.99%	4.51%	9.75%	42.78%	15.70%	5.78%	1.99%	10.83%		
	8.66%		14.26%			21.48%		12.82%			
	22.92%					34.30%					
Average change	-11.22				0.00	11.16					
Recreation & Culture	20% less	15% less	10% less	5% less	The same	5% more	10% more	15% more	20% more	Average response	Average Answer
# of responses	57	19	49	62	219	79	20	6	43	-0.06	No change
% of responses	10.29%	3.43%	8.84%	11.19%	39.53%	14.26%	3.61%	1.08%	7.76%		
	13.72%		20.04%			17.87%		8.84%			
	23.91%					26.71%					
Average change	-11.90				0.00	10.44					
Total Number of Responses:	554.00										