



About SAULTEAUX FIRST NATION

The Saulteaux First Nation is part of the larger Ojibwa or Chippewa tribe residing in the Northern United States. The word ‘Saulteaux’ is a French translation for ‘people of the rapids’, and relates to their original Ontario settlement location near a waterway. Originally, the Saulteaux First Nation settled around the Northern Great Lakes region in Ontario. The soil conditions and short growing season made it difficult to farm, so their lifestyle was focused on hunting and trading with European settlers. Due to expansion of the fur trade, a portion of the Saulteaux tribe traveled west and settled in Saskatchewan.

HIGHLIGHTS AND OPPORTUNITIES

- The Saulteaux First Nation signed Treaty 6 on August 18, 1854.
- Saulteaux First Nation owns 67.5 acres of land between Highways 11 and 12 in the Rural Municipality of Corman Park. Their total land base in Treaty 6 Territory is 14,347 acres.
- The First Nation is in the process of developing a Land Use Plan under the Saulteaux First Nation Governance guidelines, to identify current and future needs.
- The community recently completed a strategic plan in order to sustain physical, mental, emotional, and spiritual health of band members.
- Other economic sources for the band include: tourism and forestry.

DEMOGRAPHICS

Total Population: 1,287 persons

On Reserve: 682 persons /Off Reserve: 605 persons

Total Reserves/Settlements/Villages: 43,295.5 acres

(Source: Aboriginal Affairs and Northern Development Canada, http://pse5-esd5.ainc.inac.gc.ca/fnp/Main/Search/FNMain.aspx?BAND_NUMBER=347&lang=eng)

TRIBAL COUNCIL AFFILIATION

Battleford Tribal Council (BTC) Member

ECONOMICS

IN SASKATOON REGION

Land Holdings (Total)	67.5 acres
Rural Holding	67.5 acres

Status: The property is currently used for agricultural purposes. Development options are being considered.

Employment (On Reserve)

Full Time, Part-Time, Seasonal Employee	n/a
---	-----

Business Developments – Current

n/a	
-----	--

Business Developments – Proposed

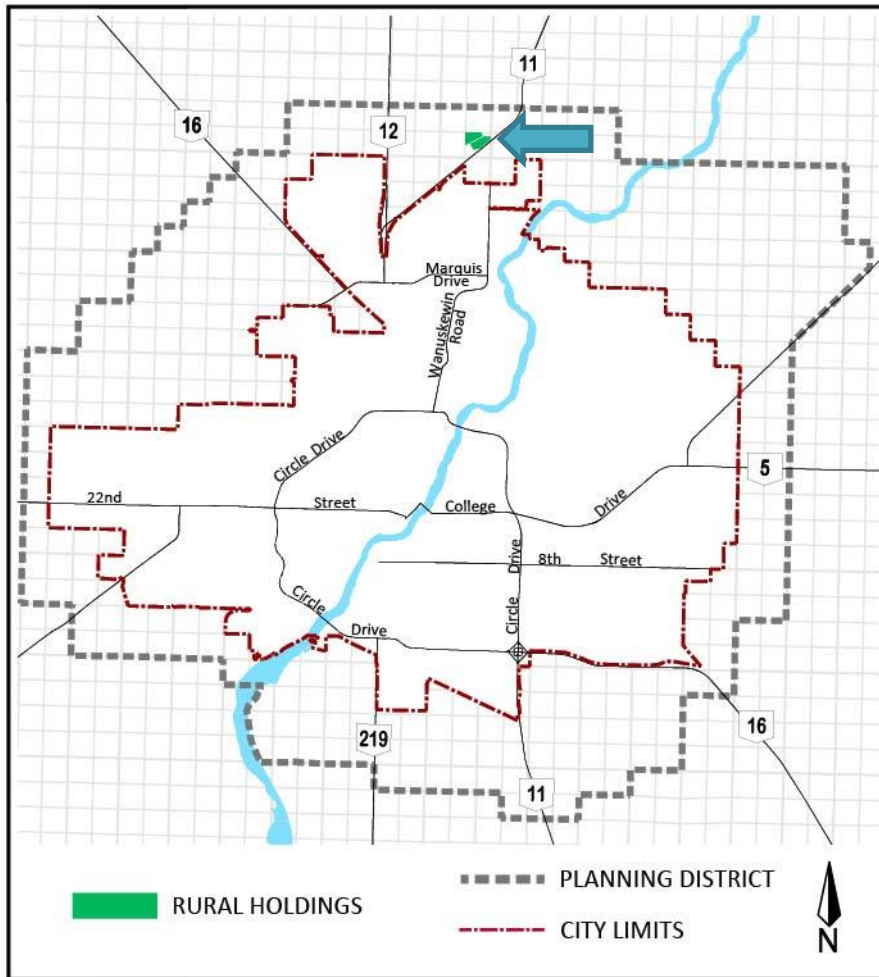
To be announced.	
------------------	--

OUTSIDE SASKATOON REGION

Agricultural lands	

Source: Saulteaux First Nation.

Saulteaux First Nation Land Holdings
City of Saskatoon and Region
Approximately 67.53 acres



HOME RESERVE INFORMATION

Location

The Saulteaux First Nation is located 43 kilometres north of North Battleford near Cochin and Jackfish Lakes.

Services

Facilities available on reserve include a band office, community hall, Elders lodge, medical clinic, fire hall, water treatment plant, arena, daycare and Saulteaux Heritage School.

Nearby lakes and parks offer opportunities for camping, fishing and hunting. They also contribute to the economy through tourism.

Education

Saulteaux Heritage School serves the community and educates children in kindergarten to grade nine.

GOVERNANCE

Chief: Kenny Moccasin
Councillors: Brian Moccasin
Dolphus Moccasin
Grant Moccasin
Leo Moccasin
Ricky Moccasin
Election Term: March 25, 2017 to
March 28, 2020

For more information



City of Saskatoon, Planning and Development Division
306-975-3340 regional.planning@saskatoon.ca www.saskatoon.ca
Saskatoon Regional Economic Development Authority (SREDA)
306-664-0720 info@sreda.com www.sreda.com

CONTACT INFORMATION

Saulteaux First Nation
PO Box 159 Cochin, SK S0M 0L0
306-386-2424, 306-386-2067
Fax 306-386-2444
www.saulteauxfn.ca